



# Midwest Prospect's Sioux Falls

## Results

2/10/2024

*Drew Yahnke*

## 30 Yard Dash Times

4.03, 3.97

IF Velocity

-

OF Velocity

-

1B - Velocity

66-68mph

C - Velocity

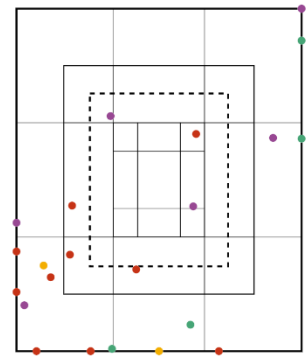
-

C- Pop Times

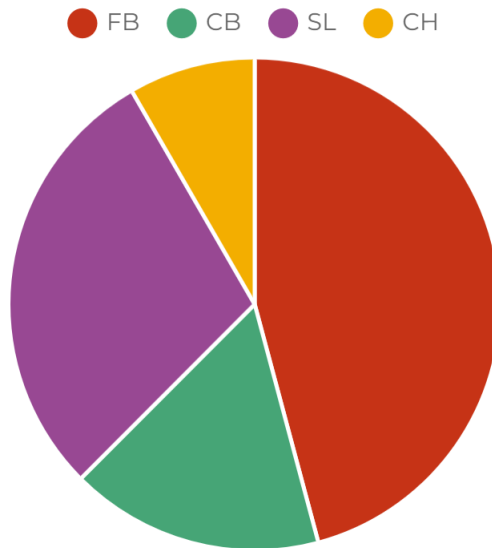
-

### DATA

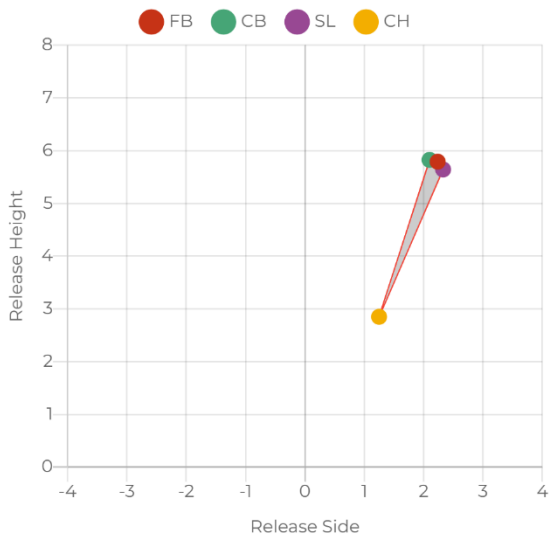
Pitch Type	Velo	Max. Velo	RPM	Max. RPM	V-Break	H-Break	Spin Eff.	Gyro Degree	Spin Dir.	Strike %	R. Angle	H. Angle	R. Height	R. Side
FB	78.8	79.7	2,021	2,218	15.9	8.3	77.3	39	00:36	18.2%	-2.6	-4.2	5.8	2.2
CB	63.9	65.6	1,766	1,894	-3.6	-7.7	49.3	61	08:23	0.0%	1.9	-0.4	5.8	2.1
SL	67.4	68.7	1,936	2,005	-0.5	-4.1	40.9	66	08:34	28.6%	2.2	-2.0	5.6	2.3
CH	70.6	70.6	1,427	1,427	7.4	5.7	78.7	38	00:22	0.0%	-0.9	-2.7	2.9	1.3



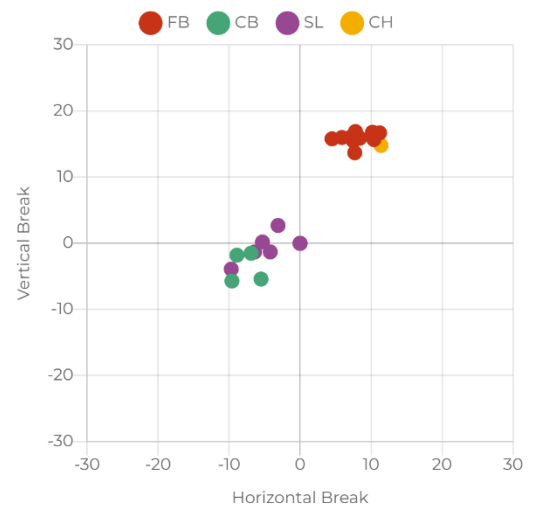
### PITCH TYPE %



### RELEASE AVERAGES



### BREAK PLOT

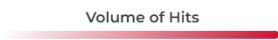


## DATA

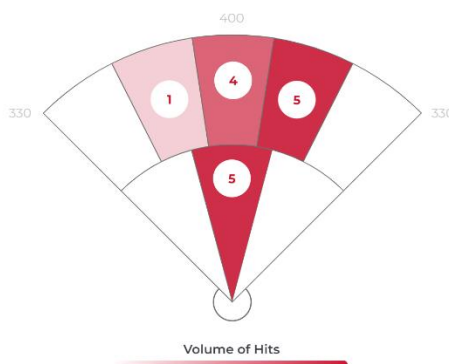
	Avg	Max	Hard Hit Avg		
Exit Velocity	82.1	89.4	84.5	Batting Avg.	0.600
Launch Angle	22.1	46.5	18.0	xwOBA	0.503
Direction	6.1°R	21.6°R	3.7°R	Slugging	0.600
Distance	204	295	192	Hard Hit %	80%
Spin Rate	1,759	2,998	1,558	Bombs %	33.3%
				Ropes %	13.3%

### EXIT VELOCITY BY ZONE

	83.7 (1/14)	83.8 (1/14)	
	82.8 (6/14)	86.4 (1/14)	
	73.4 (1/14)	79.3 (3/14)	85.1 (1/14)



### HIT VOLUME



Zone	Pull	Middle	Oppo
Volume of Hits	0/15	12/15	3/15
Avg. LA	-	21.0	26.0
Avg. EV	-	83.0	80.0
Avg. Spin	-	1,747	1,804
Avg. Distance	-	200	216

### HIT CLASSIFICATION

- Ground Ball
- Low Line Drive
- High Line Drive
- Fly Ball



### HIT OUTCOMES

- Single
- Field Out

